

# Footfall Report for: Chester

Weeks This Month: 4  
Weeks Last Month: 5

## Monthly Footfall Counts

	Year to date %		Year on year %		Month on month %	
	2023	2022	2023	2022	2023	2022
Chester	1.4%	41.4%	-1.3%	1.3%	-2.2%	3.6%
North & Yorkshire	1.4%	44.0%	-1.5%	10.6%	-5.0%	0.2%
High Street Index - BDSU (BDSU - Comparison)	8.4%	67.3%	3.7%	24.7%	-1.1%	0.0%
BDO Sales(Weekly)						
UK	5.8%	55.8%	1.2%	22.7%	-1.7%	2.1%

Benchmark calculations (Year on Year and Month on Month) have been calculated using like for like data sets (only those counters available in both comparison periods) to ensure statistical accuracy

## Headlines

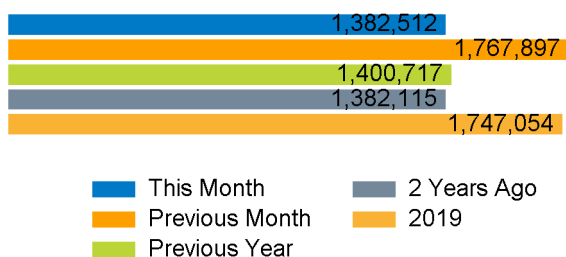
The total number of visitors for the year to date is 9,514,712 which is 1.4% up on the previous year.

The total number of visitors to Chester in month commencing 2 July 2023 was 1,382,512.

The busiest day in month commencing 2 July 2023 was Saturday 15 July with 85,532 visitors.

The peak hour of the month was 13:00 on Saturday 29 July 2023 with footfall of 9,095.

## Footfall Counts by month



Figures shown below are calculated using monthly totals.

## Weather



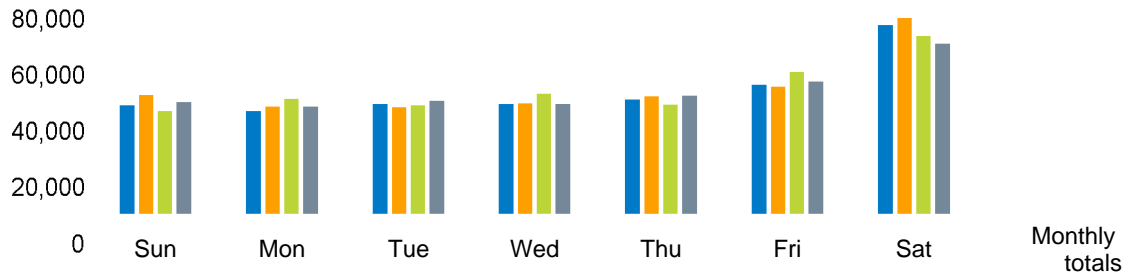
Number of days this month	7	19	2
Number of days same month last year	13	5	10
Number of days same month two years ago	14	1	13

## Average temperature

	Maximum temperature	Minimum temperature
2023	21°	12°
2022	22°	14°
2021	23°	14°

## Footfall Counts by day

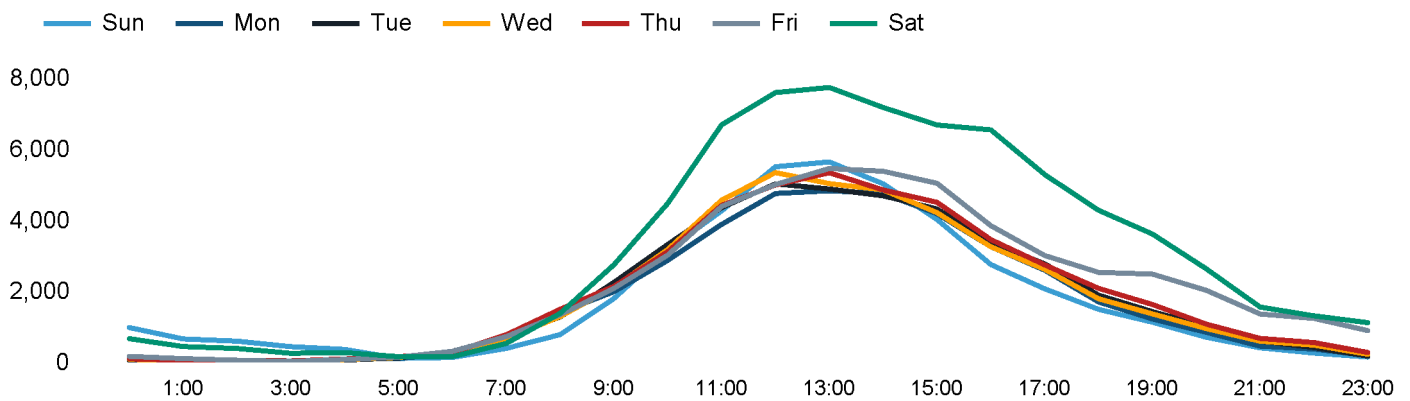
The figures shown below are calculated using weekly averages.



This Month	43,798	41,506	44,114	44,132	45,843	51,653	74,582	345,628
Previous Month	47,644	43,280	42,904	44,489	47,125	50,774	77,363	353,579
Previous Year	41,382	46,140	43,607	48,225	44,065	56,507	70,253	350,179
2 Years Ago	45,029	43,263	45,360	44,113	47,509	52,797	67,457	345,528
Month on month %	-8.1%	-4.1%	2.8%	-0.8%	-2.7%	1.7%	-3.6%	
Year on year %	5.8%	-10.0%	1.2%	-8.5%	4.0%	-8.6%	6.2%	

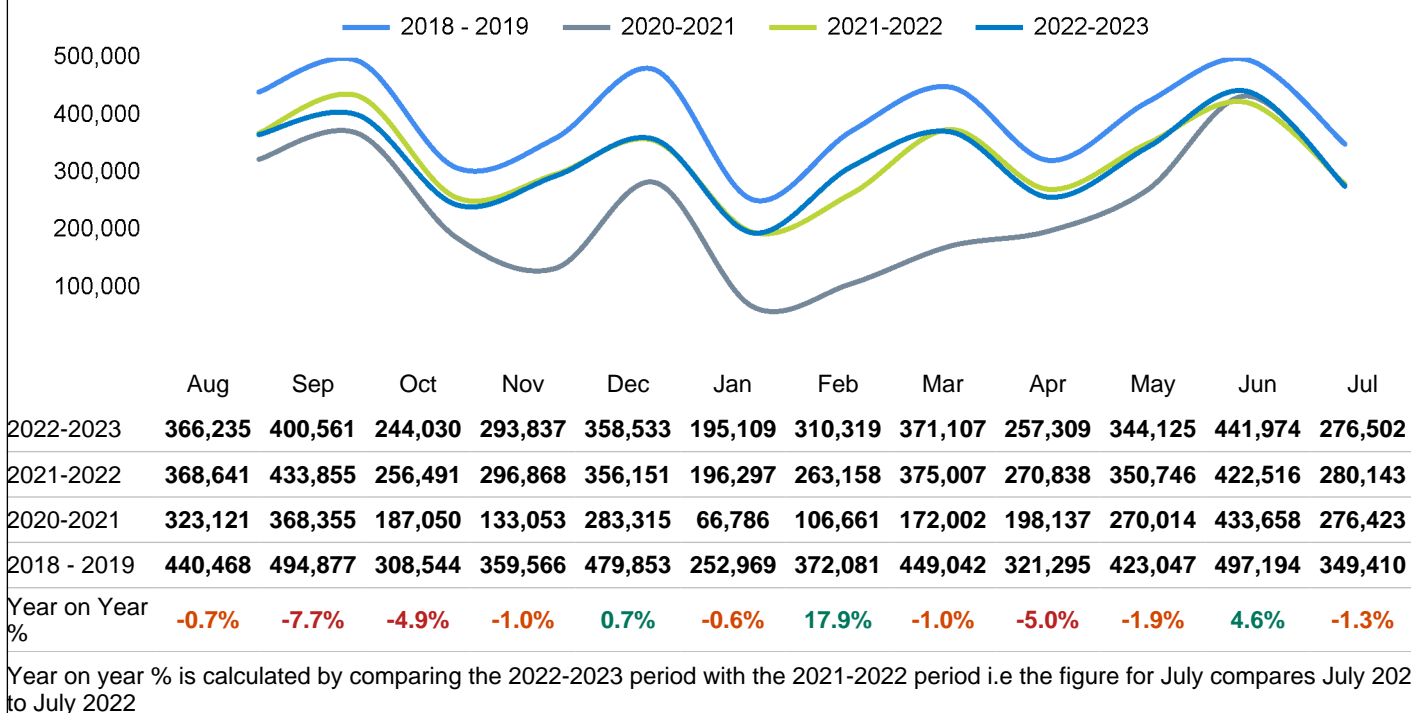
## Footfall Counts by hour

The figures shown below are calculated using a weekly average



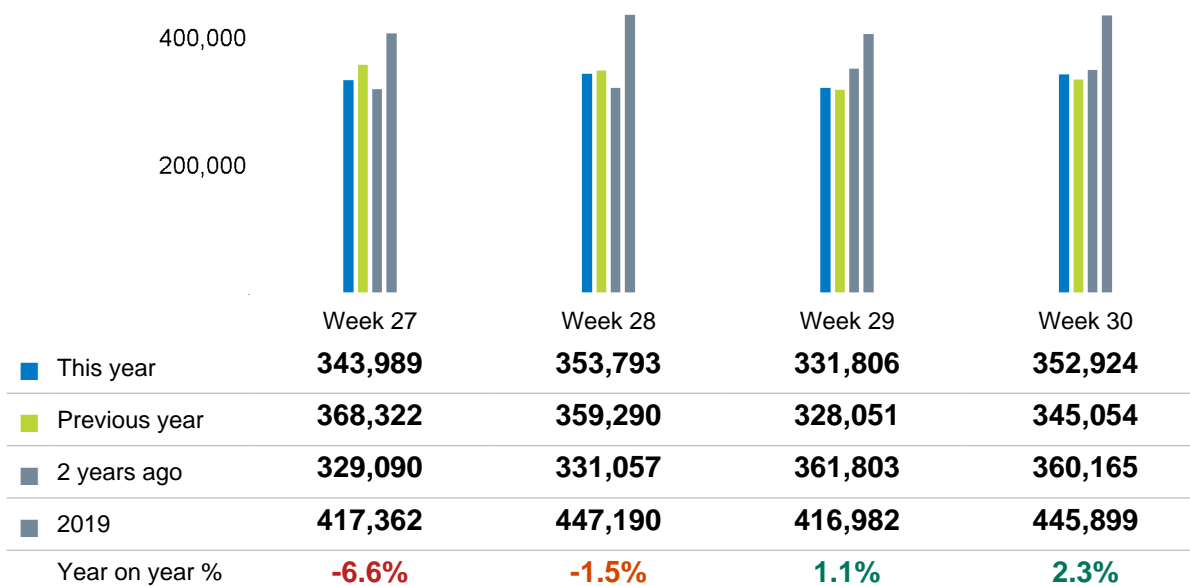
## Footfall Counts - rolling 12 months

The figures shown below are calculated using weekly averages.



## Footfall Counts by week of month

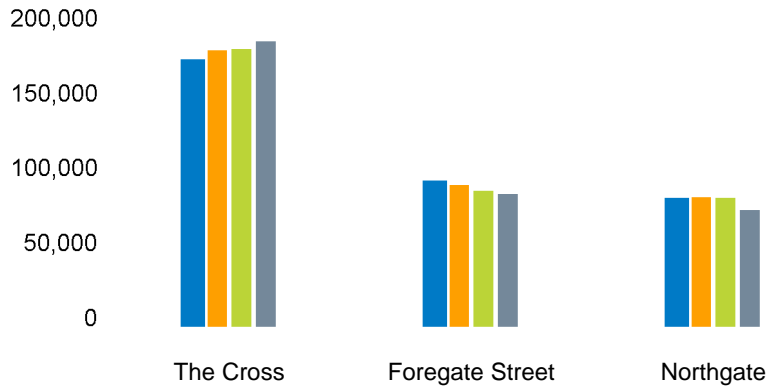
The figures shown below are calculated using weekly totals.



## Footfall Counts by location

The figures shown below are calculated using weekly averages.

■ This month   
 ■ Previous month   
 ■ Previous year   
 ■ 2 Years ago



This Month	<b>169,357</b>	<b>93,543</b>	<b>82,727</b>
Previous Month	<b>176,950</b>	<b>92,096</b>	<b>84,533</b>
Previous Year	<b>177,509</b>	<b>88,463</b>	<b>84,206</b>
2 Years Ago	<b>182,521</b>	<b>86,383</b>	<b>76,624</b>
Year on Year %	<b>-4.6 %</b>	<b>5.7 %</b>	<b>-1.8 %</b>

## Footfall Counts by location



■ The Cross, 49.0 %  
■ Foregate Street, 27.1 %  
■ Northgate, 23.9 %

## Reporting dates

This month - 02 July 2023 - 29 July 2023

Year to Date % Change is the annual % change in footfall from January of this year compared to the same period last year. January, 2023 to July, 2023 Vs January, 2022 to July, 2022

Year on Year % Change is the % change in footfall for this month compared to the same week in the previous year. July, 2023 Vs July, 2022

Month on Month % Change is the % change in footfall for this Month from the previous Month. 7 2023 Vs 6 2023

# 2019 Comparison for: Chester

## 2019 comparison for Chester

The impact of Covid-19 on footfall means that subsequent to the anniversary of Lockdown 1 (23rd March 2021), it is important to add a further annual comparison of 2022 versus 2019 in order to provide a comparison to the last normal trading year. This is provided in the section *below* and shows your current performance in 2022 against the similar time period in 2019

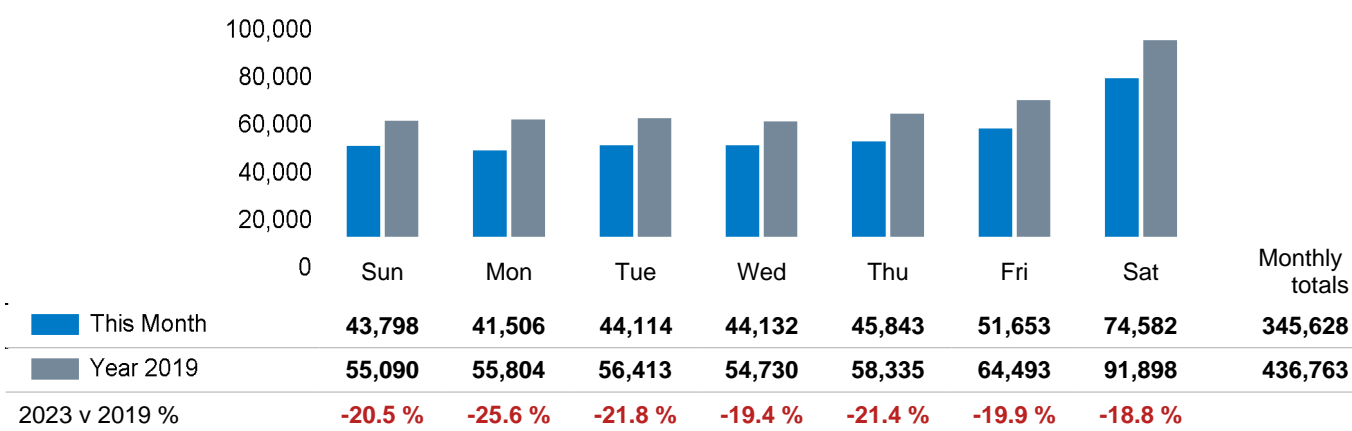
### Headlines

	Year to date % 2023 Vs 2019	Year on year % 2023 Vs 2019
Chester	<b>-17.9 %</b>	<b>-20.9 %</b>
North & Yorkshire	<b>-16.9 %</b>	<b>-16.7 %</b>
High Street Index - BDSU (BDSU - Comparison)	<b>-17.2 %</b>	<b>-18.0 %</b>
BDO Sales(Weekly)		
UK	<b>-14.4 %</b>	<b>-15.5 %</b>

Chester is compared to the high street index.

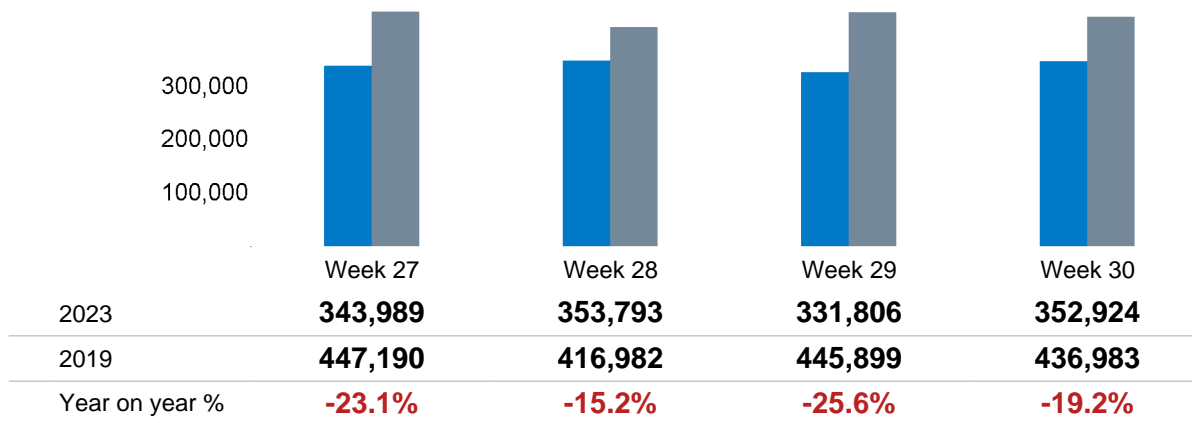
### Footfall Counts by day

The figures shown below are calculated using weekly averages.



## Footfall Counts by week of month

The figures shown below are calculated using weekly totals.



## Footfall Counts by location

The figures shown below are calculated using weekly averages.

